

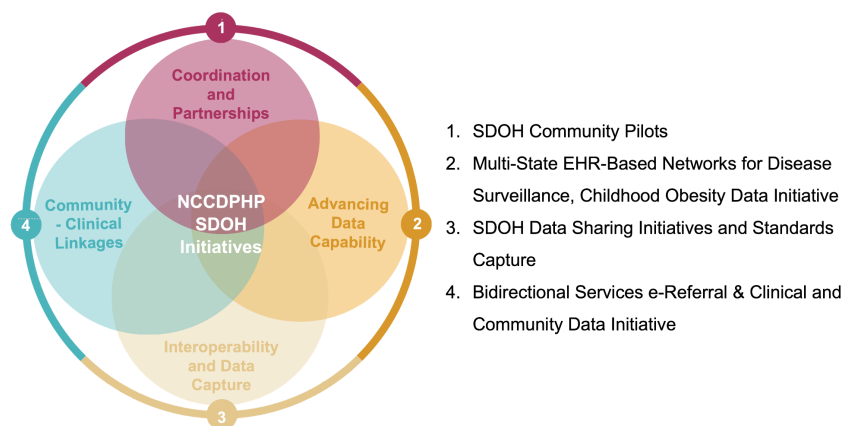


Centers for Disease Control and Prevention (CDC) Social Determinants of Health Data Exchange for Chronic Disease Prevention Initiative

Initiative Overview

The CDC's [National Center for Chronic Disease Prevention and Health Promotion](#) (NCCDPHP) Office of Informatics and Information Resource Management (OIIRM), in partnership with EMI Advisors LLC, launched the **Social Determinants of Health (SDOH) Data Exchange for Chronic Disease Prevention Initiative** to inform and drive SDOH data sharing and interoperability within public health agencies supporting prevention and control of chronic disease and health disparities. The initiative builds on the social risk domains defined under the [Gravity Project](#), a national public collaborative focused on the development and use of consensus-based standardized SDOH data.

Figure 1: CDC's NCCDPHP Advancing SDOH Initiatives through Data Modernization



Initiative Scope

- Establish a cross-sector Workgroup to develop a consensus-based SDOH public health business case and use case for chronic disease prevention.

What is a Use Case?

- A use case is the technical narrative of the interactions between the individuals and the systems they use to document, exchange, aggregate, and analyze electronic data.
- The use case will guide data sharing and data use activities of the CDC SDOH Pilot Programs^{1,2} over a five-to 10-year timeline.

How can you participate?

Join the SDOH Data Exchange for Chronic Disease Prevention Initiative! The initiative will use the [Gravity Project Confluence Platform](#) to convene and engage participants in discussion and will launch in April 2022.

To learn more about the Initiative and/or to express interest in participating, please sign up [here](#) or contact Gabriela Gonzalez (gabriela.gonzalez@emiadvisors.net) and Savannah Mueller (savanah.mueller@emiadvisors.net). Kailah Davis (lui9@cdc.gov) is the CDC contact.

¹ <https://www.cdc.gov/chronicdisease/programs-impact/sdoh/community-pilots.htm>

² <https://www.cdc.gov/chronicdisease/programs-impact/sdoh/accelerator-plans.htm>



Centers for Disease Control and Prevention (CDC) Social Determinants of Health Data Exchange for Chronic Disease Prevention Initiative

Why Use the Confluence Platform?

- Promotes broad partner engagement for diverse groups spanning clinical- and community-based providers, public health, health IT vendors, health systems, payers, researchers, and patient advocates.
- Provides information for interested groups to join the initiative, sign up for the distribution list, view the meeting schedule, and learn more about the workgroup.
- Allows facilitation of workgroup meetings via online video conferencing with all meeting materials and deliverables published online.

A timeline for an SDOH public health use case

Past: The Gravity Project has made significant strides in establishing a foundation for representation and exchange of SDOH data across and between health- and community-based systems.

Present: Gravity [Use Cases](#) focus on data documentation during a clinical encounter for exchange with other non-clinical and administrative systems.

Future: The Gravity framework for public health will collect and use aggregated SDOH data from electronic health records (EHRs) to advance population and community-driven interventions.

What is the public health sector's role?

The integration of health care, public health, and social services provides significant gains in combating upstream social risk factors, such as laws and policies that shape community conditions and are largely outside of the control of the individual. Public health's focus on population-level interventions, disease prevention, and health metrics addresses SDOH through leadership and expertise. Ultimately, the integration and interoperability of SDOH data document and address various factors at individual, community, and population levels for meaningful outcome analysis to improve whole-person care.