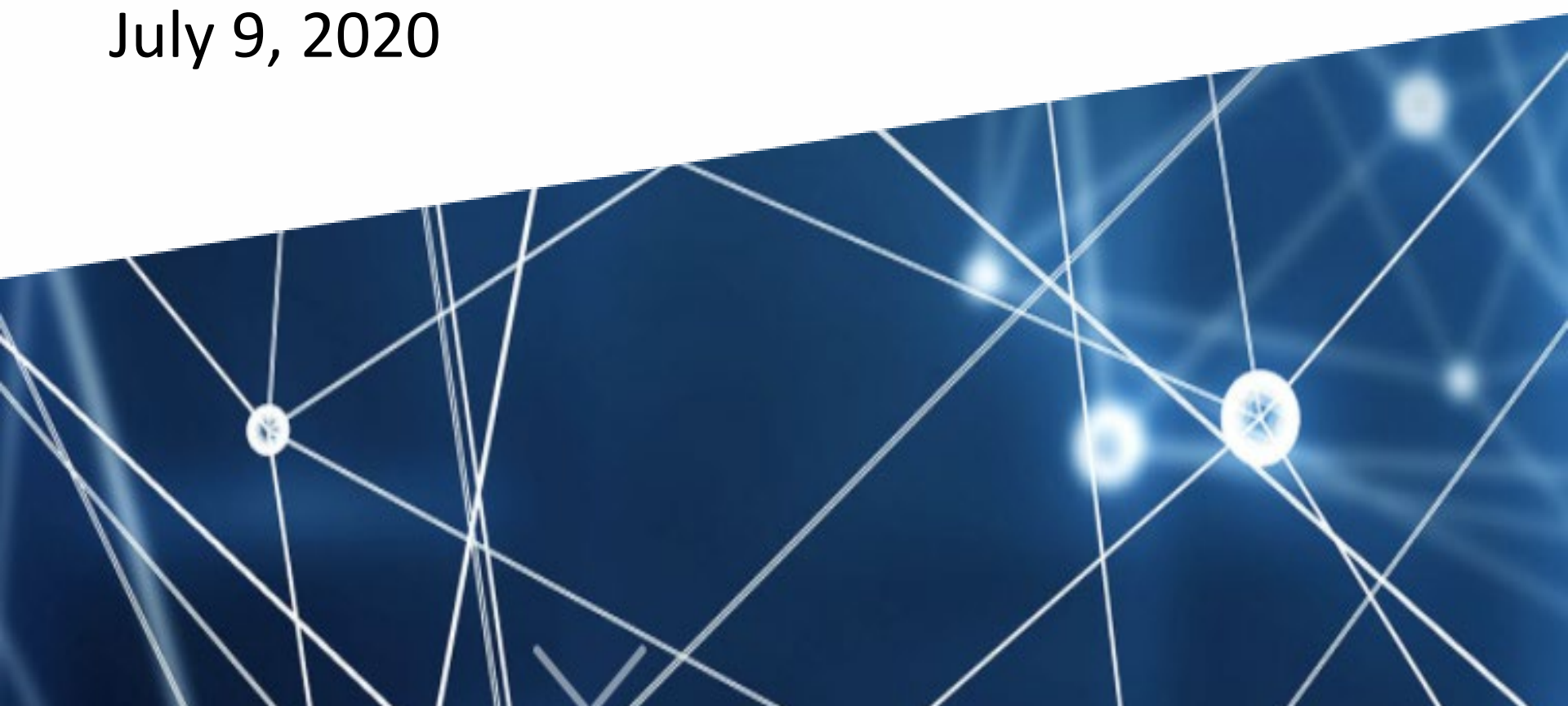


The Gravity Project



Housing Data Concept Review
July 9, 2020



Welcome

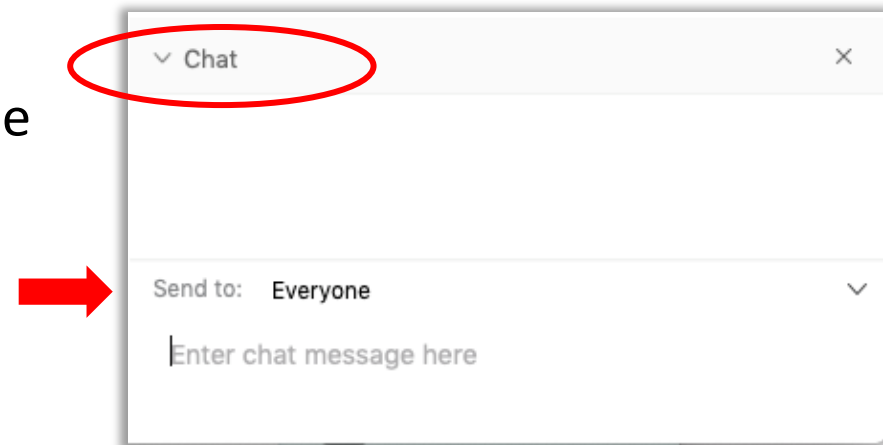
Thank you for joining the **Gravity Project** Workgroup meeting!

Due to the large number of attendees, participants are **muted upon entry**. *Please remain muted to avoid background noise.*

This call is being recorded; recording will be available on the Gravity Confluence page following

You are encouraged to actively participate in the discussion using the Webex chat feature (bottom right of the Webex Meeting window).

Please send chats to “Everyone.”



Gravity Project Anti-Trust Practices

- Gravity Project participants have the responsibility to comply fully with federal and state antitrust laws.
- Individuals speaking or providing written communications shall refrain from any discussion which may provide the basis for an inference that they have agreed to take any action relating to prices, services, production and allocation of markets or any other matter having a market effect.
- Participants shall not discuss their pricing or others' pricing or any term that might affect pricing or fees, such as costs, discounts, terms of sales or profit margins.
- Adherence to these guidelines involves not only avoidance of antitrust violations, but avoidance of behavior that might be so construed.

Gravity Project Participation

- If you have not already done so, we invite you to **officially join the project here:**

<https://confluence.hl7.org/display/GRAV/Join+the+Gravity+Project>

- If you want to **check whether you have already signed up** or if others from your organization have signed up, please review the existing membership here:

<https://confluence.hl7.org/pages/viewpage.action?pageId=46892669#JointheGravityProject-GravityProjectMembershipList>

- For **all other Gravity Project information**, please visit:

<https://confluence.hl7.org/display/GRAV/The+Gravity+Project>

Project Founders and In-Kind Support To-Date



The University of Vermont
LARNER COLLEGE OF MEDICINE



Yale School of Nursing

sirenUCSF



BlueCross
BlueShield
Association

eat
right.

Academy of
Nutrition
and Dietetics



The Office of the National Coordinator for
Health Information Technology



newwave

Humana.



Gravity Project Sponsorship



- The Gravity Project is currently seeking additional sponsors for our 2020 operations
 - This is an opportunity to be a recognized contributor to our critical national work
- If you are interested in learning more about sponsoring opportunities, please send an email to GravityProject@emiadvisors.net or visit <https://confluence.hl7.org/display/GRAV/Gravity+Project+Sponsors>

We're Hiring!

Comprehensive Project Manager

- If you are here, you already care about addressing social risk and good data
- We are looking for a new PM to help organize and integrate both of our project streams: terminology and FHIR IG
- Application is on the confluence!
- Or, email - hello@emiadvisors.net

The Gravity Project is on Social Media!


- The Gravity Project is now official on social media
- We will be using the social media platforms for relevant project and SDOH data integration related communications
- We invite you to follow us on LinkedIn and Twitter
 -  : Gravity Project
 -  : @thegravityproj
- Help us spread the word!

Agenda

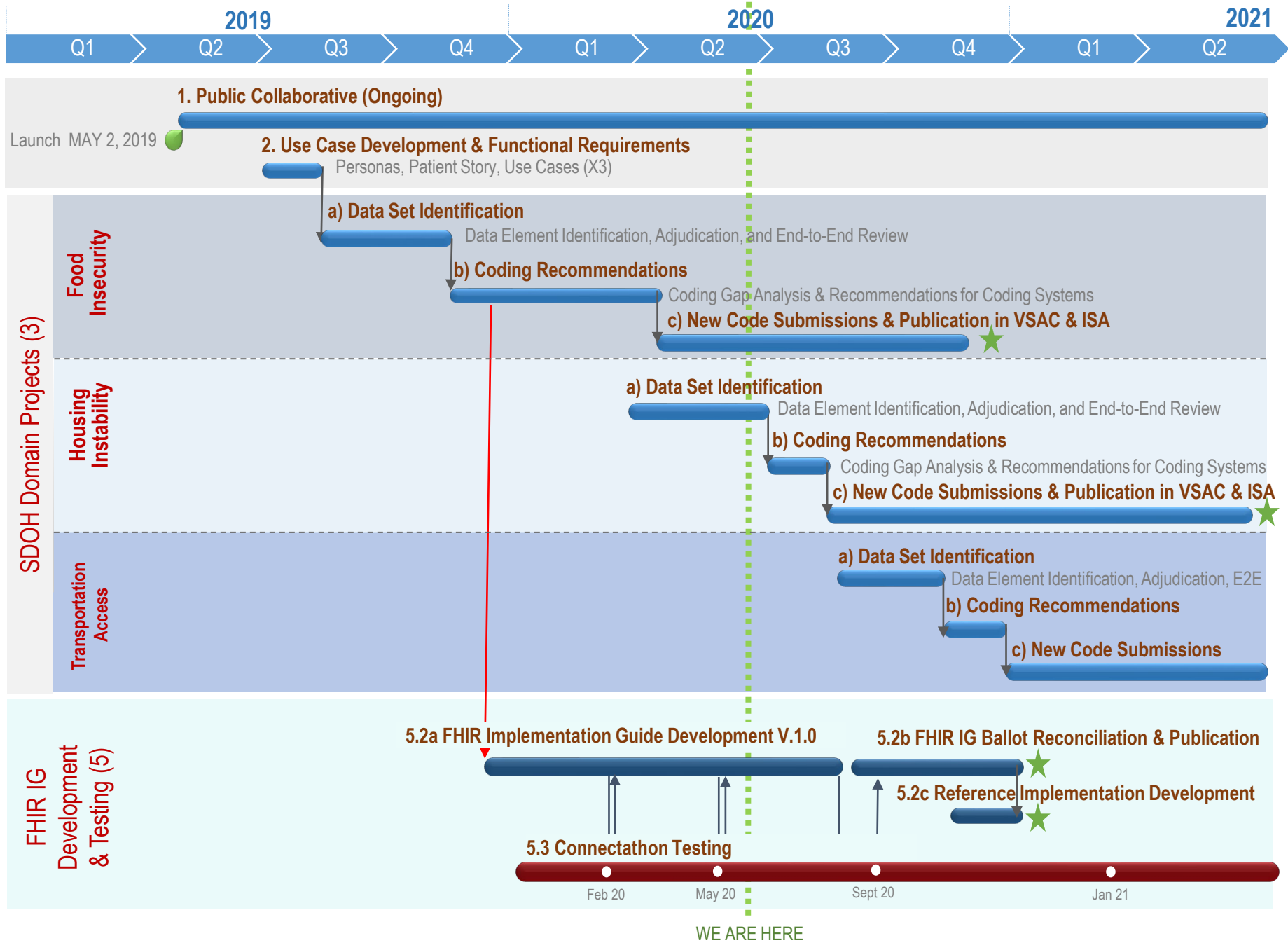
Topic	Presenter
Announcements	Sarah
Project Roadmap and Upcoming Schedule	Sarah
Update: Housing Instability and Homelessness Data Concepts Submission Status	Linda
End to End Review: Housing Instability and Homelessness Interventions	Sarah
Update: Inadequate Housing Data Concepts Submission Status	Linda
Discussion: Inadequate Housing	Sarah
Community Homework and Next Steps	Sarah
Overview: Gravity Terminology Development Process	For Review

Please submit questions and comments using the Webex chat feature.

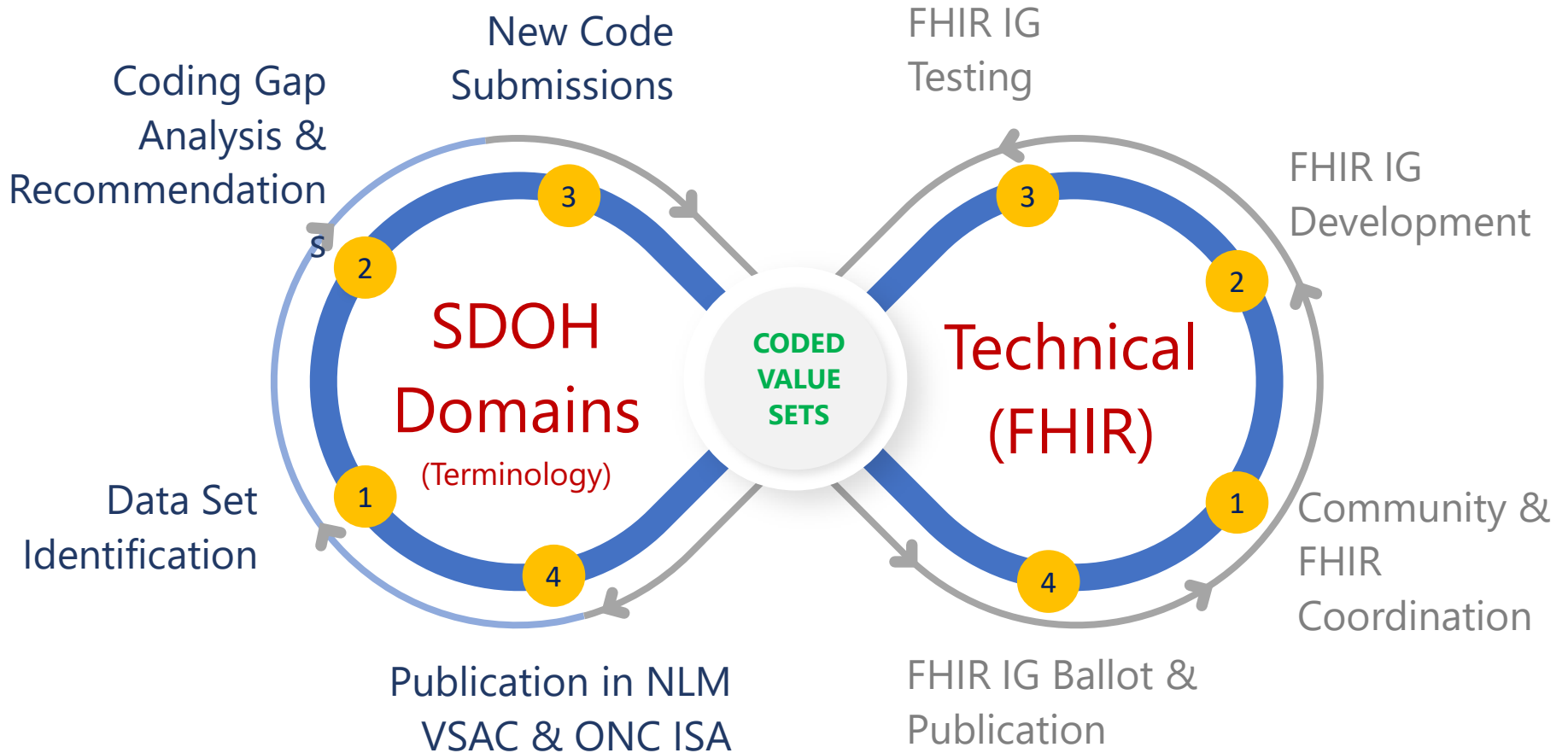
Gravity Project Schedule and Activities (June through July)

Date	Gravity WG Meeting Tasks	Homework
06/11	<p><i>Phase I Review: End-to-End Review of Housing Instability and Homelessness Data Elements</i></p> <p><i>Phase II: Inadequate Housing Kickoff</i></p>	<p><i>Review and submit comments: Housing Instability and Homelessness Master List</i></p> <p><i>Submit: Inadequate Housing Concepts</i></p>
06/25	<p><i>Phase I Review: End-to-End Review of Housing Instability and Homelessness Data Elements</i></p> <p><i>Phase II: Inadequate Housing Data Element Concepts</i></p>	<p><i>Review and submit comments: Housing Instability and Homelessness Master List</i></p> <p><i>Submit: Inadequate Housing Concepts</i></p>
 07/09	<p><i>Phase I Review: End-to-End Review of Housing Instability and Homelessness Data Elements</i></p> <p><i>Phase II: Inadequate Housing Data Element Concepts</i></p>	<p><i>Review and submit comments: Housing Instability and Homelessness Master List</i></p> <p><i>Submit: Inadequate Housing Concepts</i></p>
07/23	<p><i>Phase I Review: End-to-End Review of Housing Instability and Homelessness Data Elements</i></p> <p><i>Phase II: Inadequate Housing Data Element Concepts</i></p>	<p><i>Review and submit comments: Housing Instability and Homelessness Master List</i></p> <p><i>Submit: Inadequate Housing Concepts</i></p>
08/06	<p><i>Phase I Review: End-to-End Review of Housing Instability and Homelessness Data Elements</i></p> <p><i>Phase II: Inadequate Housing Data Element Concepts</i></p>	<p><i>Review and submit comments: Housing Instability and Homelessness Master List</i></p> <p><i>Submit: Inadequate Housing Concepts</i></p>

Gravity Timeline (tier 1 with code submissions)



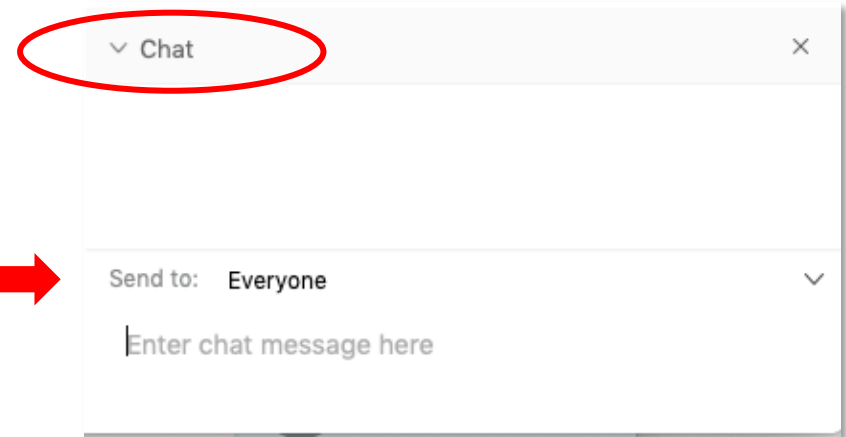
Gravity Overview: Two Streams



Questions?

You are encouraged to actively participate in the discussion using the Webex chat feature (bottom right of the Webex Meeting window).

Please send all chats to Everyone.

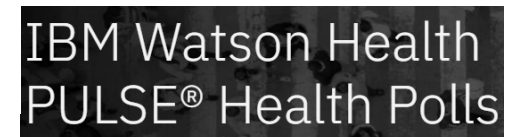


Update: Housing Instability and Homelessness Data Concepts Submission Status

Housing Instability Data Element Submitters



Washington Association for Community Health
Community Health Centers • Advancing Quality Care for All



Data Element Submissions Summary

Total Submissions Received = 15

Screening Tool/ Questions	Diagnosis	Goal	Intervention
29 Tools / 360 Questions	15	14	86

Submissions Reviewed = 15

Disposition	Disposition	Disposition	Disposition
Add – 22 Tools/132 Questions	Add – 11	Add – 4	SNOMED Add – 65 CPT/HCPCS – Add – 3
Duplicates –5 Tools/7 Questions Synonymous 1 Tool/ 1 Question	Duplicates – 1	Duplicate – 0 Synonymous - 2	Duplicates – 4 Synonymous – 45
Do Not Add – 9 Tools/171 Questions	Do Not Add – 11	Do Not Add – 1	Do Not Add – 11
Park – 13 Tools/52 Questions	Park – 2	Park – 6	Park – 8
Hold – 0 Tools/0 Questions	Hold – 0	Hold – 0	Hold – 3

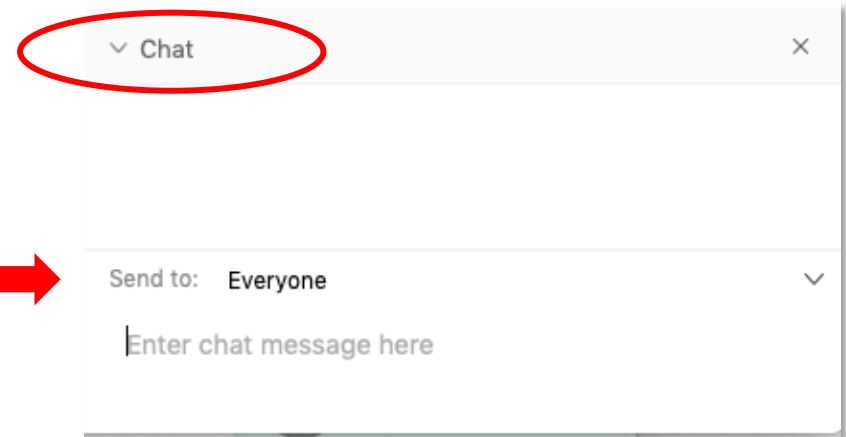
Total Submissions Returned* = 14

* Adjudication completed and file returned to submitter with dispositions

Questions?

You are encouraged to actively participate in the discussion using the Webex chat feature (bottom right of the Webex Meeting window).

Please send all chats to Everyone.



End-to-End Review: Housing Instability and Homelessness Interventions

Housing Instability Intervention Summary

id	Program, Profession, Person	Intervention
IS-62	N/A	Assessment for housing insecurity
IS-9	N/A	Assessment of barriers in housing insecurity care plan
IS-8	N/A	Assessment of goals to achieve housing security
IS-7	N/A	Assessment of progress toward goals to achieve housing security
IS-10	N/A	Coordination of care plan
IS-11	N/A	Coordination of care team
IS-25	N/A	Coordination of resources to address housing instability
IS-12	N/A	Counseling for barriers to engagement in housing insecurity care plan
IS-13	N/A	Counseling for barriers to goals to achieve housing security
IS-14	N/A	Counseling for readiness for engagement in housing insecurity care plan
IS-15	N/A	Counseling for readiness for goals to achieve housing security
IS-22	N/A	Counseling for socioeconomic factors
IS-20	Benefits enrollment assistance program	Education about benefits enrollment assistance program
IS-18	Community Action Agency program	Education about Community Action Agency Program
IS-23	Community resource network program	Education about community resource network program
IS-37	Day Shelter	Education about Day Shelter
IS-33	Emergency Shelter	Education about Emergency Shelter
IS-66	Fair Housing Organization	Education about Fair Housing Organization
IS-29	Homelessness Prevention	Education about Homelessness Prevention
IS-48	N/A	Education about housing only
IS-26	Housing support program	Education about housing support program
IS-45	Housing with Services	Education about Housing with Services (no disability required for entry)
IS-51	Legal aid	Education about legal aid
IS-49	Medical legal partnership	Education about medical legal partnership
IS-43	Permanent Supportive Housing	Education about Permanent Supportive Housing (disability required for entry)
IS-41	Rapid Re-housing	Education about Rapid Re-Housing
IS-65	Rental assistance	Education about rental assistance
IS-39	Safe Haven	Education about Safe Haven
IS-31	Street Outreach	Education about Street Outreach
IS-53	Subsidized housing	Education about subsidized housing

Housing Instability Intervention Summary cont.

id	Program, Profession, Person	Intervention
IS-35	Transitional Housing	Education about Transitional Housing
IS-36	Day Shelter	Evaluation of eligibility for Day Shelter
IS-32	Emergency Shelter	Evaluation of eligibility for Emergency Shelter
IS-28	Homelessness Prevention	Evaluation of eligibility for Homelessness Prevention
IS-47	N/A	Evaluation of eligibility for housing only
IS-24	Housing support program	Evaluation of eligibility for housing support programs
IS-44	Housing with Services	Evaluation of eligibility for Housing with Services (no disability required for entry)
IS-42	Permanent Supportive Housing	Evaluation of eligibility for Permanent Supportive Housing (disability required for entry)
IS-40	Rapid Re-housing	Evaluation of eligibility for Rapid Re-Housing
IS-64	Rental assistance	Evaluation of eligibility for rental assistance
IS-38	Safe Haven	Evaluation of eligibility for Safe Haven
IS-30	Street Outreach	Evaluation of eligibility for Street Outreach
IS-34	Transitional Housing	Evaluation of eligibility for Transitional Housing
IS-1	N/A	Evaluation of progress toward goals to achieve housing security
IS-17	N/A	Health Risk Assessment
IS-55	Emergency housing funds	Provision of emergency housing funds (and referral)
IS-60	Federal project based rental assistance	Provision of federal project based rental assistance voucher
IS-59	Federal tenant rental assistance	Provision of federal tenant based rental assistance voucher
IS-58	Non-federal rental assistance	Provision of non-federal rental assistance voucher
IS-46	Coordinated Entry	Referral for Coordinated Entry
IS-61	N/A	Referral to additional service to maintain housing stability
IS-21	Benefits enrollment assistance program	Referral to benefits enrollment assistance program
IS-3	Care manager	Referral to care manager
IS-4	Care navigator	Referral to care navigator
IS-2	Case manager	Referral to case manager
IS-19	Community Action Agency program	Referral to Community Action Agency Program
IS-6	Community health worker	Referral to community health worker
IS-68	Community nurse specialist	Referral to community nurse specialist
IS-16	Community resource network program	Referral to community resource network program
IS-56	Emergency housing funds	Referral to emergency housing funds
IS-67	Fair Housing Organization	Referral to Fair Housing Organization
IS-27	Housing support program	Referral to housing support programs
IS-57	Lawyer	Referral to lawyer
IS-52	Legal aid	Referral to legal aid
IS-50	Medical legal partnership	Referral to medical legal partnership
IS-5	Social worker	Referral to social worker
IS-54	Subsidized housing	Referral to subsidized housing
IS-63	Tenant rights organization	Referral to tenants rights organization

Programs

“Refer to...” Evaluate Eligibility for..” “Educate About”

- Benefits Enrollment Assistance
- Community Action Agency
- Community Resource Network
- Fair Housing Organizations
- Housing Support Programs
- Legal Aid
- Medical Legal Partnership
- Rental Assistance
- Subsidized Housing
- Tenants Rights Organization



HOUSING SECURITY



ACCESS HOUSING
RESOURCES



ACCESS PERMANENT
HOUSING



ACCESS SHELTER

- Referral to additional services to maintain housing stability

HMIS Programs

“Refer to...” Evaluate Eligibility for..” “Educate About”

- Coordinated Entry
- Day Shelter
- Emergency Shelter
- Homelessness Prevention
- Housing with No Services
- Permanent Supportive Housing
- Rapid Re-Housing
- Street Outreach
- Transitional Housing



HOUSING SECURITY



ACCESS HOUSING
RESOURCES



ACCESS PERMANENT
HOUSING



ACCESS SHELTER

Professions

“Refer to...” “Educate About”

- Case Manager
- Care Manager
- Care Navigator
- Community Nurse Specialists
- Lawyer
- Social Worker
- Community Health Worker



HOUSING SECURITY



ACCESS HOUSING
RESOURCES



ACCESS PERMANENT
HOUSING



ACCESS SHELTER

Activities

Provision of non-federal rental assistance voucher

Provision of federal tenant based rental assistance voucher

Provision of federal project based rental assistance voucher

Provision of emergency housing funds



HOUSING SECURITY



ACCESS HOUSING
RESOURCES



ACCESS PERMANENT
HOUSING



ACCESS SHELTER

Activities

Assessment of progress toward goals to achieve housing security

Assessment of goals to achieve housing security

Assessment of barriers in housing insecurity care plan

Coordination of care plan

Coordination of care team

Counseling for barriers to engagement in housing insecurity care plan

Counseling for barriers to goals to achieve housing security

Counseling for readiness for engagement in housing insecurity care plan

Counseling for readiness for goals to achieve housing security



HOUSING SECURITY



ACCESS HOUSING RESOURCES



ACCESS PERMANENT HOUSING



ACCESS SHELTER

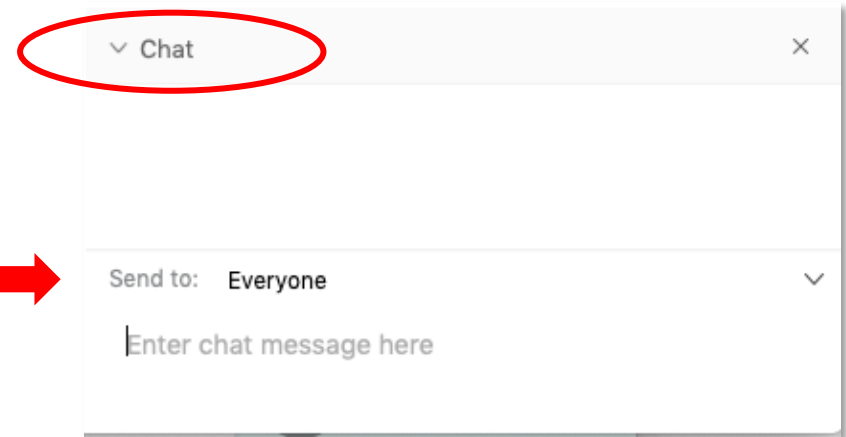
How to Submit End-to-End Review Comments

- Download latest Housing Instability Master List:
<https://confluence.hl7.org/display/GRAV/Housing+Instability+and+Homelessness+Domain>
- Email all comments regarding data elements to
gravityproject@emiadvisors.net
- For data elements currently ON the Master List
Include data element ID # and reason(s) you do not feel the element is appropriate for Housing Instability and Homelessness
- For data elements NOT ON the Master List
 - Submit the data element type (Screening, Diagnosis, Goal, Intervention)
 - Include a description for the data element you propose
 - For screening elements, attach a copy or link to the tool
 - **Comments regarding Intervention submissions due:**
8/06/2020

Questions?

You are encouraged to actively participate in the discussion using the Webex chat feature (bottom right of the Webex Meeting window).

Please send all chats to Everyone.



Update: Inadequate Housing Data Concepts Submission Status

Inadequate Housing Data Element Submissions Summary

Total Submissions Received = 3

Screening Tool/ Questions	Diagnosis	Goal	Intervention
13 Tools / 44 Questions	3	0	33

Submissions Reviewed = 3

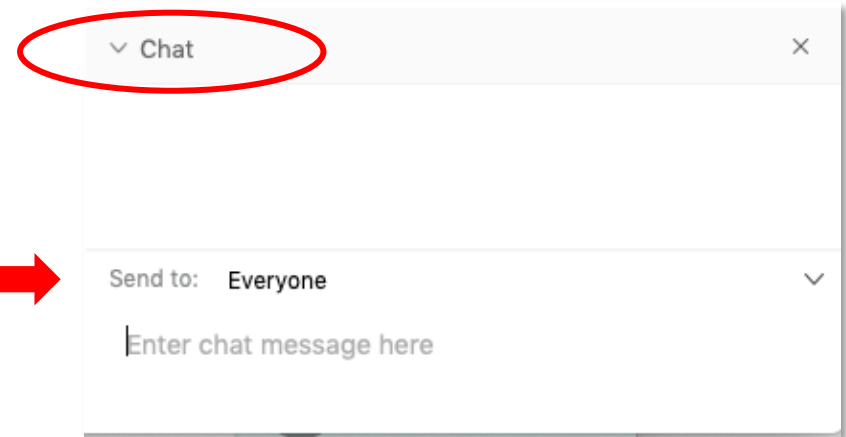
Disposition	Disposition	Disposition	Disposition
Add – 8 Tools/10 Questions	Add – 1	Add –	SNOMED Add – 23 CPT/HCPCS – Add –
Duplicates –	Duplicates –	Duplicate –0	Duplicates – Synonymous –
Do Not Add –	Do Not Add –	Do Not Add –	Do Not Add – 6
Park – 3 Tools/16 Questions	Park –	Park –	Park –
Hold – 4 Tools/18 Questions	Hold – 2	Hold	Hold – 4

Total Submissions Returned* =

Questions?

You are encouraged to actively participate in the discussion using the Webex chat feature (bottom right of the Webex Meeting window).

Please send all chats to Everyone.



Discussion: Inadequate Housing

Inadequate Housing

SCREENING	DIAGNOSES- ICD	Diagnoses- SNOMED	GOALS	INTERVENTIONS
Narruzzuman (And adapted) American Housing Survey CHW	Z59.1 Inadequate Housing	Inadequate Housing (Subdomains)		NOW- General SDOH concepts carried over from previous domains

Inadequate housing –

- House- An occupied housing unit that has moderate or severe physical problems (e.g., deficiencies in plumbing, heating, electricity, hallways, and upkeep) (HUD, 2010)
- Person- (*In process*)- Living within housing that has physical problems (deficiencies in plumbing, heating, electricity, hallways, and upkeep) (*affecting health*)

Data Submission Framework

- Screening tools
- Assessments/Diagnoses
- **Goals of care**
- **Interventions**
 - Program Names and Definitions
 - Provider/Practitioner Roles (e.g. community health navigator)
 - Applicable Intervention Activities/Services

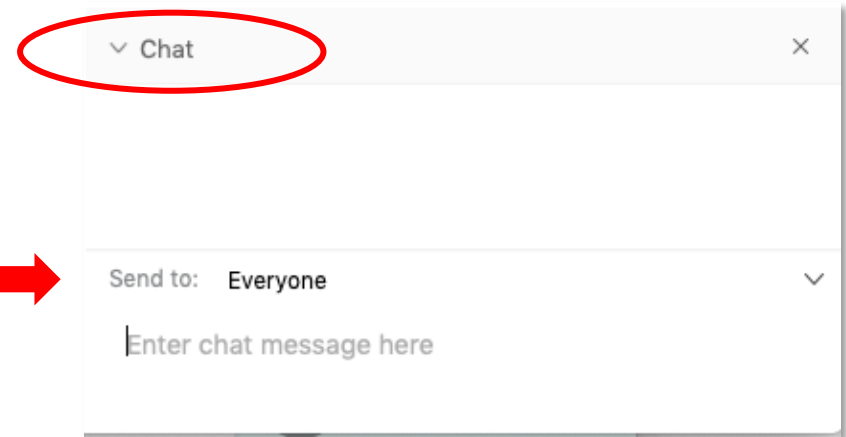
Goals and Interventions Huddle

- Goals
 - If Inadequate Housing is the problem... Is Adequate Housing the goal?
 - Is there are strata of severity that is relevant for clinical considerations?
 - Unsafe vs Safe?
- Interventions
 - Are there other programs to consider?
 - Agencies on Aging?
 - Habitat for Humanity?
 - Programs from the Housing Instability and Homelessness work?

Questions?

You are encouraged to actively participate in the discussion using the Webex chat feature (bottom right of the Webex Meeting window).

Please send all chats to Everyone.



Community Homework and Next Steps

Homework

▪ General

- Catch up as needed on materials and recordings on Gravity Project Materials Confluence page

- <https://confluence.hl7.org/display/GRAV/The+Gravity+Project+Materials>

▪ Housing Instability and Homelessness

- Review the Master and Screening Summary

- <https://confluence.hl7.org/pages/viewpage.action?pageId=76157877#HousingInstabilityandHomelessnessDomain-CommunityHomework>

- Send comments

▪ Inadequate Housing

- Submit new concepts

- Online tool
- Excel
- Email

- <https://confluence.hl7.org/pages/viewpage.action?pageId=76157877#HousingInstabilityandHomelessnessDomain-CommunityHomework>

Next Steps

- Join the Gravity Project as a Committed Member or Other Interested Party:
 - <https://confluence.hl7.org/display/GRAV/Join+the+Gravity+Project>

Overview: Gravity Terminology Development Process

Gravity Terminology Development Process

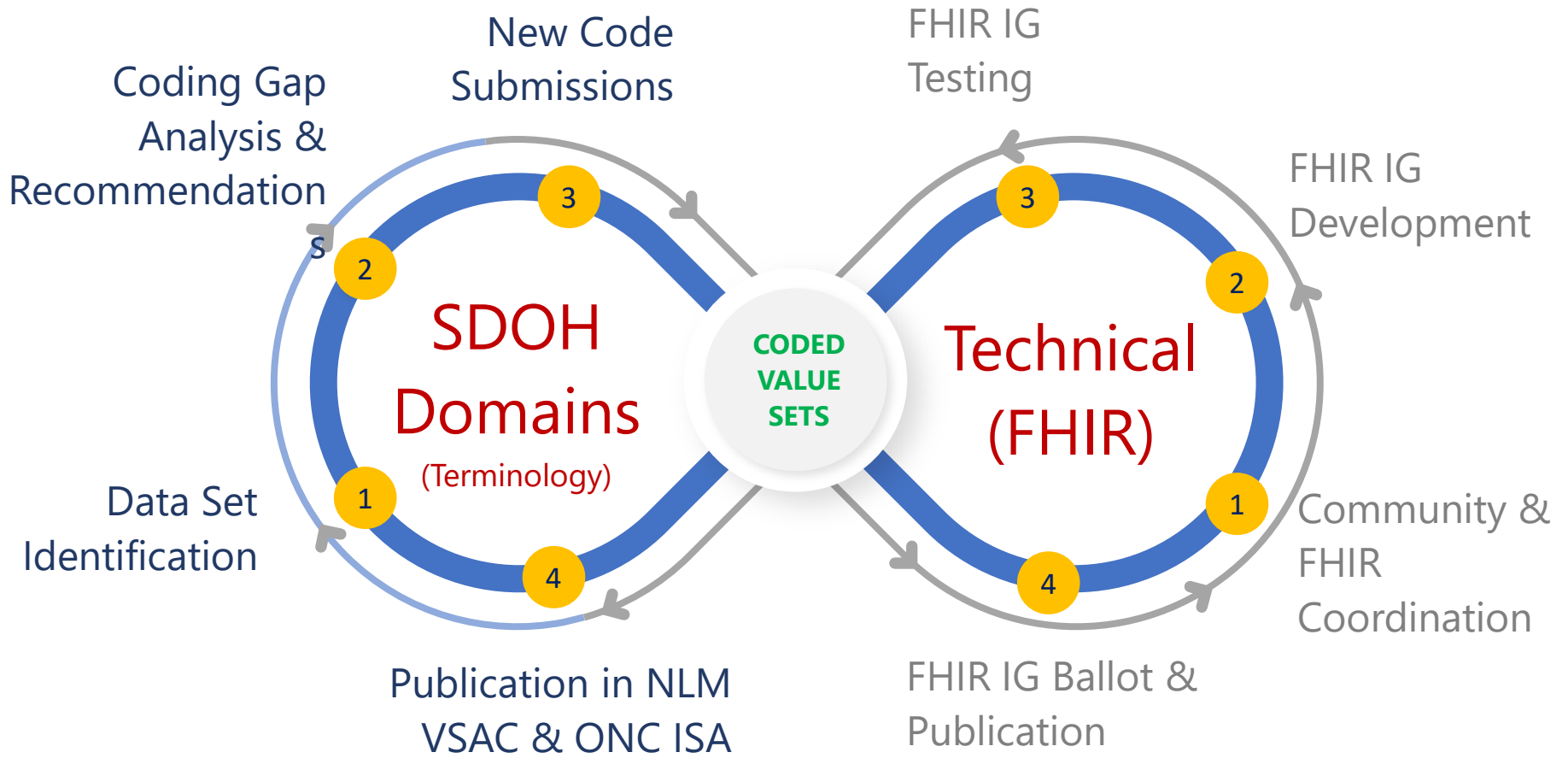
- A. Community Terminology Development
- B. Publication of ONC Gap Analysis and Recommendations Manuscript
- C. New Code Submissions (LOINC, SNOMED, ICD-10-CM)
- D. Development of Coded Value Sets
- E. Value Set Publication

Community Terminology Development

A. Community Terminology Development

1. The anchor of every domain is the SIREN compendium of existing SDOH terminology – a study of what exists
 - <https://sirennetwork.ucsf.edu/tools-resources/mmi/compendium-medical-terminology-codes-social-risk-factors>
2. Domain relevant terms are gleaned from the compendium and adjudicated against the literature
3. A collective brainstorming enriches the Master List
 1. Always published on Confluence
4. Concepts are added, refined, *and defined*, until we've a representative set aligned with literature and practice
5. Consensus Review and Voting

Gravity Overview: Two Streams



Adjudication Dispositions - Review

Adjudication Status	Definition	Disposition
Duplicate Data Element	Conceptually similar, same code(s), same answers for questions	Submitter will be added as contributor for the data element in the Master file
Add Data Element	In scope, fit for purpose, not too broad and not too narrow	Data element will be added to the Master file
Do Not Add - Park	Not in scope for this domain but may be useful for another Gravity Domain (housing insecurity, transportation)	Will be added to a Parking File for future review
Do Not Add	Not in scope for this domain or another Gravity domain, not well formed, not fit for purpose	Will be noted on adjudication file with reason
On-Hold (Info Needed)	Need additional clarification from submitter	Will be noted on adjudication file with additional information needed
Withdrawn	After discussion between submitter and SMEs, concept was withdrawn by submitter	Will be noted on adjudication file with reason

Thank you for participating in this national consensus-building process.

Additional questions? Contact: gravityproject@emiadvisors.net