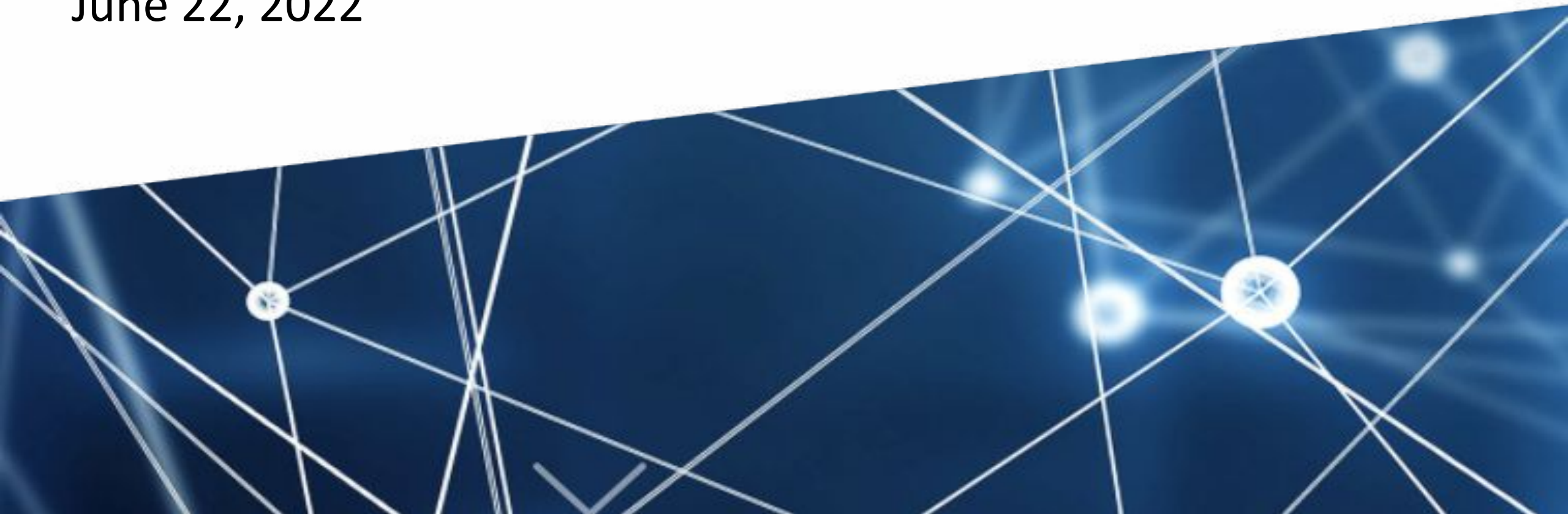


CMS July Virtual Connectathon



Gravity Track Planning

June 22, 2022



Gravity Technical Workstream, Powered By

newwave SAFFRON_{labs}

&

AMA 

Join the Gravity Track Today!

Participate in the July CMS Connectathon, powered by **SAFFRON**_{labs}

- Register [here](#) by June 30th.
- Gravity Track page [here](#).
- Weekly Gravity Track Planning calls, Wednesdays from 3:00- 4:00 PM ET. Join [here](#).

Timeline



Date	Connectathon Planning Tasks
06/15/22	Gravity Track Implementor Connection Planning Kick-Off Call
6/22/22	Continue Discussion of Actor Roles. Begin to Develop Personas and Define Scenarios
06/29/22	Confirm Participation and Track Plan Documentation
07/06/22	Finalize Actor Roles and Transactions Track Lead Touchpoint on 7/12 (finalize/sign-up for demos)
07/13/22	CMS Implementer Kickoff Call at 4PM ET- Review Agenda and Test Plans Address Emerging Details, Testing Needs/Assumptions, Ideas for Capturing the Experience and Learnings
07/19/22 - 7/21/22	CMS FHIR Virtual Gravity Project Track July 19-21 7/20 Gravity Track Review Session

Agenda

Topic	Presenter
Weekly Gravity Track Connectathon Schedule (3m)	Greg
Objectives of Gravity Track at CMS Connectathon (5m)	Aaron
Continue Discussion of Actor Roles (30m)	All
Begin to Develop Personas (10m)	Greg/ Aaron
Begin to Define Scenarios/ Use Cases (3) (10m)	Greg/Aaron
Next Steps	Greg

Weekly Gravity Track Connectathon Schedule

HL7 SDOH CC FHIR IG Public Meetings are scheduled Wednesdays from 3:00 to 4:00 pm ET

- See the HL7 meeting calendar here: <http://www.hl7.org/concalls/CallDetails.cfm?concall=54498>

[Click here for the Meeting Minutes](#)

Date	Time	Topics	Webinar Information
Next meeting will occur on June 15th	3:00 to 4:00 pm ET	1. Initiate Weekly Connectathon Touchpoint	<p>Join Zoom Meeting https://zoom.us/j/5328571160 Meeting ID: 532 857 1160</p> <p>Phone Number: +1 929-436-2866</p> <p>Participant Passcode: 532 857 1160</p> <p>When joining the Webinar, please ensure to identify yourself by including your first and last name and the name of your organization so that we may identify all participants.</p> <p>Please note that all calls will be recorded for purposes of note taking.</p>

The July 2022 CMS Connectathon is rapidly approaching! **Please join us at the Connectathon on July 19-21 to participate, test, and learn.**

We invite you to join the weekly Gravity SDOH Clinical Care FHIR IG calls. These calls occur Wednesdays 3:00pm-4:00pm EST and the meeting information can be found [here](#). In the coming weeks, the Gravity IG calls will be used as prep for the Connectathon and will be referred to as **Weekly Gravity Track Connectathon Calls.**

Gravity Track CMS Connectathon Objectives

- Demonstrate use of FHIR across the continuum of healthcare and social services
- Explore alignment opportunities across active FHIR-based initiatives:
 - **Gravity Project: Social Determinants of Health**
 - TBD - Our objectives for the Connectathon will be decided based on the opinion of the community of participants.

<https://confluence.hl7.org/display/FHIR/2020-05+Care+Coordination+Track>

Actor Roles

Actor	Role	Participant Name/ Organization
1	Practitioner or Patient referral exchange (Pulse/ Clarity)	Greg Harris/ Saffron Labs
2	Planning to participate with code - add more information	John Manning, Matt Bishop, Brian Handspicker /FHIR-FLI - MayJuun, Open City Labs
3	Participating with code - Patient/Caregiver eCare plan application; fill out FHIR Questionnaire PRAPARE	Karen Bertodatti, Dave Carlson, Emma Jones / EMI Advisors Project: Multiple Chronic Conditions (MCC) eCare Plan Project (NIDDK/AHRQ)
4	Gravity pilot site - will test the following SDOH domains: food insecurity, housing, and transportation - add more information	OCHIN
5	Provide a provider workflow through referral to CBRO	Lisa Nelson, Matt Alrod/ MaxMD
6	Hoping to learn more on 6/22 call	Mary, Lisa, Mike/ MiHIN
7	Hoping to learn more on 6/22 call	HealthLX
8	OBSERVER - Referee/ CBO role	QS Systems
9	OBSERVER - FHIR IG to support access to a Human Service Resource Directory to enable social care referrals. Testing solutions while testing IG (balloting in the Jan 2023 PSS)	Ioana Singureanu, Serafina Versaggi/ FEI Systems- Administration for Community Living (ACL)
10	OBSERVER - Gravity pilot site	AllianceChicago

Begin to Develop Personas

Example Patient Persona - Stella Creed

- Dual Eligible (Medicare & Medicaid 1915(c) Waiver)
- 65+ years old
- Health Concerns: CKD, Frailty, Mobility, Depression
- Social Needs: **Food Insecurity**, Housing, **Transportation**, Social Isolation
- HCBS Services:
 - Community Integration
 - **Home delivered meals**
 - Home-based habilitation
 - Companion
 - **Non-medical transportation**
 - Housing
 - Crisis Intervention/ Behavior supports
- Challenges:
 - Coordination across multi-disciplinary provider groups
 - Navigating eligibility across Medicare and Medicaid programs
 - How to manage health care and HCBS received
 - How to manage progressing CKD
 - Sharing multiple assessments across settings
 - Not able to see big picture 'care plan'

Example Patient Persona - Betsy Smith

- Dual Eligible (Medicare & Medicaid 1915(c) Waiver)
- 65+ years old
- Health Concerns: Frailty, Mobility
- Social Needs: **Transportation**
- HCBS Services:
 - **Non-medical transportation**
- Challenges:
 - Coordination across multi-disciplinary provider groups
 - Navigating eligibility across Medicare and Medicaid programs
 - How to manage health care and HCBS received
 - Sharing multiple assessments across settings
 - Not able to see big picture 'care plan'

Querying the Group about Potential Personas

Given the roles discussed, flesh out the personas relevant to the Gravity Track:

-
-
-

Begin to Define Scenarios/ Use Cases (3)

Scenarios for Testing

Contributing Ingredients to Larger Stew

Working to define scope with the Gravity Community:

Potentially this may be...

- Closed Loop Referral between a Physician and a CBO
 - Clinical referral of Patient to CBO
 - Completion of referral by CBO
- Patient survey submission of SDOH risk assessment via PRAPARE
- Capture and view Personal Characteristics (race, ethnicity, sexual orientation, gender identity, recorded sex/gender, and personal pronouns)

Example Scenarios for Testing

Scenario	Scenario Description
Gravity Scenario 1	Rebecca Smith: Outpatient encounter for person with social risks/needs, screening, integrate screening info into EMR for clinical review. Visit Summary includes medical and social care information.
Gravity Scenario 2	Betsy Smith: Dual eligible receiving home and community-based services has an episode of care that encompasses an inpatient and SNF care then is discharged to home where home health care is provided to augment HCBS support before eventually being transitioned back to oversight by a Primary Care Physician.

Next Steps

- Ensuring Accessibility for Testing
- Confirm Participation and Track Plan Documentation
- Begin to Define Stories and Scenes

Questions?

Gravity Project Interim Tech. Director, Greg Harris:
Gregory.harris@newwave.io

Gravity Executive Committee Co-Chair, Aaron Seib:
aaron.seib@newwave.io

Extra Slides For Future Calls...

Scenes for Testing

1. TBD by Gravity Community of Testers
1. TBD by Gravity Community of Testers

Walk through Scenes 1 & 9

Google Sheet Care Coordination Track Steps

<https://docs.google.com/spreadsheets/d/1AZrtn3-PFFVirmqxm0EHLptdSpWK0Cy8JPhlqYs5mBE/edit#gid=0>

Review Track Testing Schedule

Google Sheet with Mater Schedule for May 13 - 15

<https://docs.google.com/spreadsheets/d/1hFmq2jvEwxLabb0dy3B09dZkwkDirfxH7XpYcR15Qpc/edit#gid=0>

Ideas for capturing lessons learned and future testing considerations