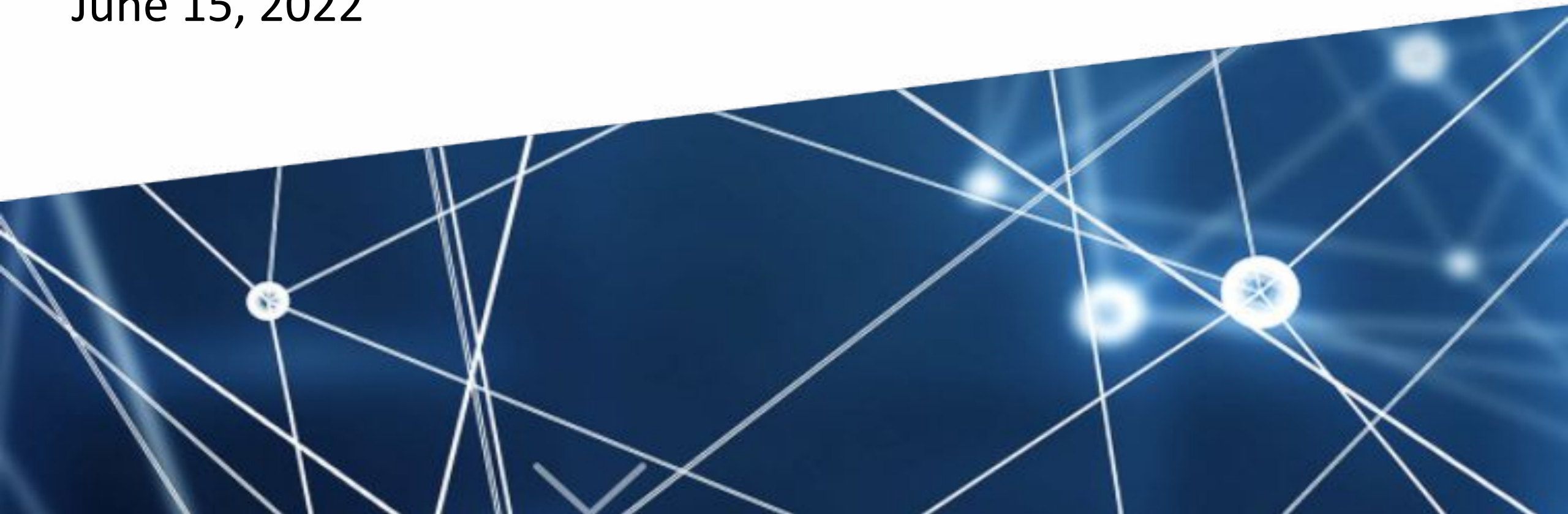


CMS July Virtual Connectathon



Gravity Track Planning

June 15, 2022




Gravity Technical Workstream, Powered By

newwave SAFFRON_{labs}

&

AMA 

Timeline

Date	Connectathon Planning Tasks
 06/15/22	Gravity Track Planning Kick-Off
6/22/22	Develop Composite Persona and Story Define Scenario and Scene Breakdown
06/29/22	Confirm Participation and Track Plan Documentation
07/06/22	Finalize Actor Roles and Transactions by Scene Track Logistics
07/13/22	Address Emerging Details, Testing Needs/Assumptions, Ideas for Capturing the Experience and Learnings
07/19/22	CMS FHIR Virtual Gravity Project Track July 19-21

Agenda

Topic	Presenter
Weekly Gravity Track Connectathon Schedule (3m)	Greg
Objectives of Gravity Track at CMS Connectathon (5m)	Aaron
Saffron Labs Demo of Referral Light Use Case (10m)	Greg
Overview of IG Interactions Diagram (10m)	Greg
Poll of Who Has What Content to Bring to Test (15m)	Aaron
Group Discussion and Decision on Which Scenarios to Demonstrate (15m)	All
Next Steps - Ensuring Accessibility for Testing (2m)	Greg

Weekly Gravity Track Connectathon Schedule

HL7 SDOH CC FHIR IG Public Meetings are scheduled Wednesdays from 3:00 to 4:00 pm ET

- See the HL7 meeting calendar here: <http://www.hl7.org/concalls/CallDetails.cfm?concall=54498>

[Click here for the Meeting Minutes](#)

Date	Time	Topics	Webinar Information
Next meeting will occur on June 15th	3:00 to 4:00 pm ET	1. Initiate Weekly Connectathon Touchpoint	<p>Join Zoom Meeting https://zoom.us/j/5328571160 Meeting ID: 532 857 1160</p> <p>Phone Number: +1 929-436-2866</p> <p>Participant Passcode: 532 857 1160</p> <p>When joining the Webinar, please ensure to identify yourself by including your first and last name and the name of your organization so that we may identify all participants.</p> <p>Please note that all calls will be recorded for purposes of note taking.</p>

The July 2022 CMS Connectathon is rapidly approaching! **Please join us at the Connectathon on July 19-21 to participate, test, and learn.**

We invite you to join the weekly Gravity SDOH Clinical Care FHIR IG calls. These calls occur Wednesdays 3:00pm-4:00pm EST and the meeting information can be found [here](#). In the coming weeks, the Gravity IG calls will be used as prep for the Connectathon and will be referred to as **Weekly Gravity Track Connectathon Calls.**

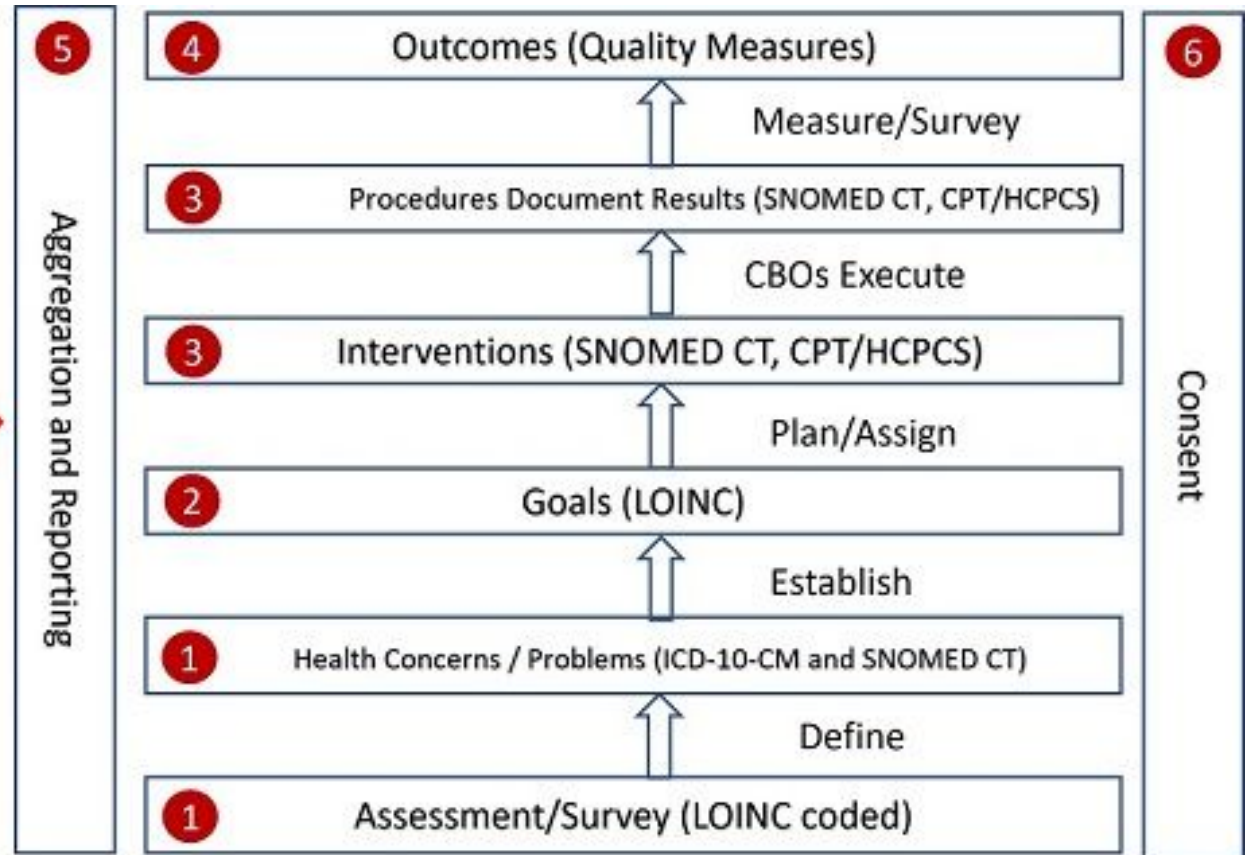
Gravity Track CMS Connectathon Objectives

- Demonstrate use of FHIR across the continuum of healthcare and social services
- Explore alignment opportunities across active FHIR-based initiatives:
 - **Gravity Project: Social Determinants of Health**
 - TBD - Our objectives for the Connectathon will be decided based on the opinion of the community of participants.

<https://confluence.hl7.org/display/FHIR/2020-05+Care+Coordination+Track>

Overview of IG Operations

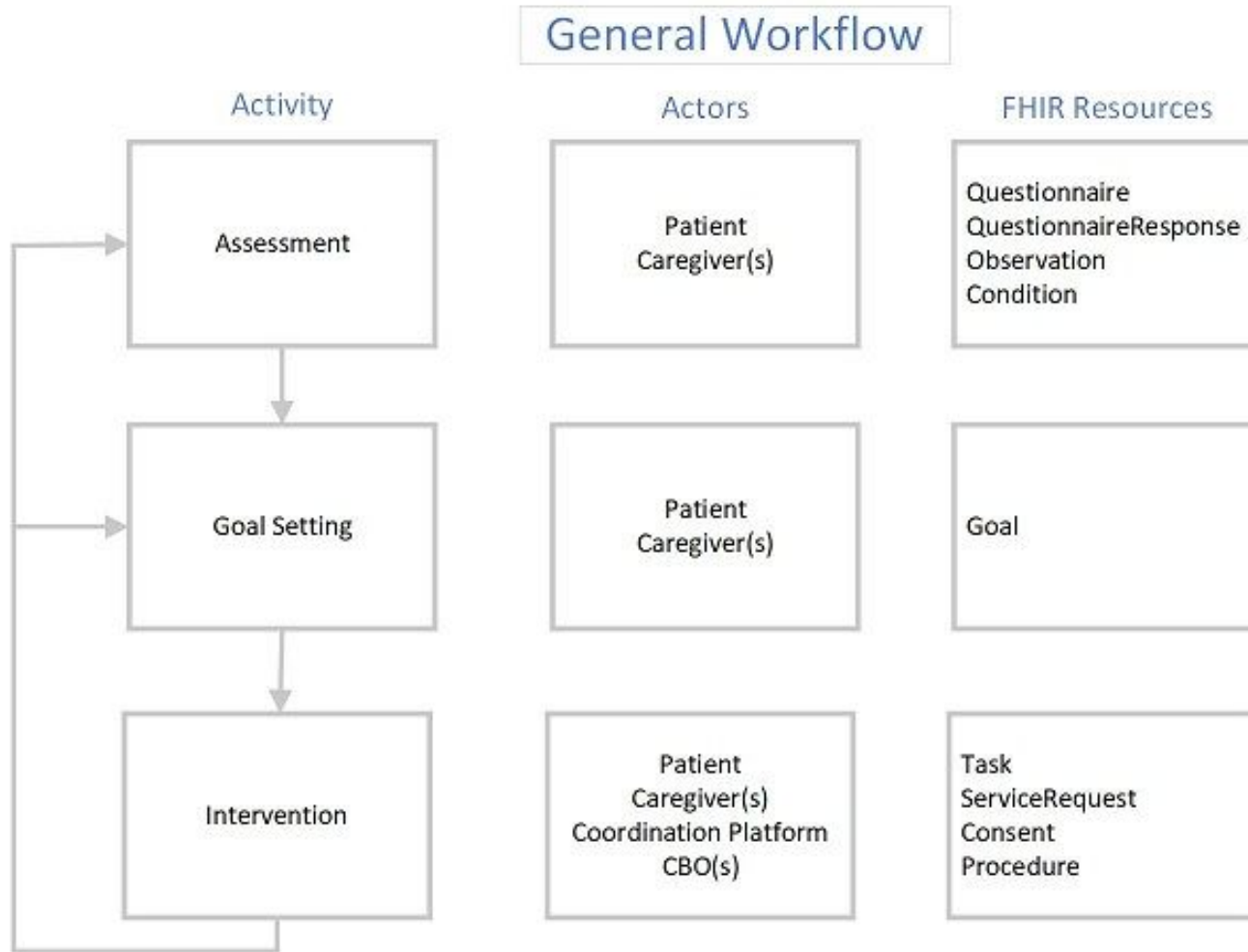
- 1 Document SDOH data in conjunction with the patient encounter and define Health Concerns / Problems.
- 2 Patient and provider establish SDOH related goals.
- 3 Plan, communicate, and track related interventions to completion.
- 4 Measure outcomes.
- 5 Establish cohorts of patients with common SDOH characteristics for uses beyond the point of care (e.g., population health management, quality reporting, and risk adjustment/ risk stratification).
- 6 Manage patient consent



IG Use Cases

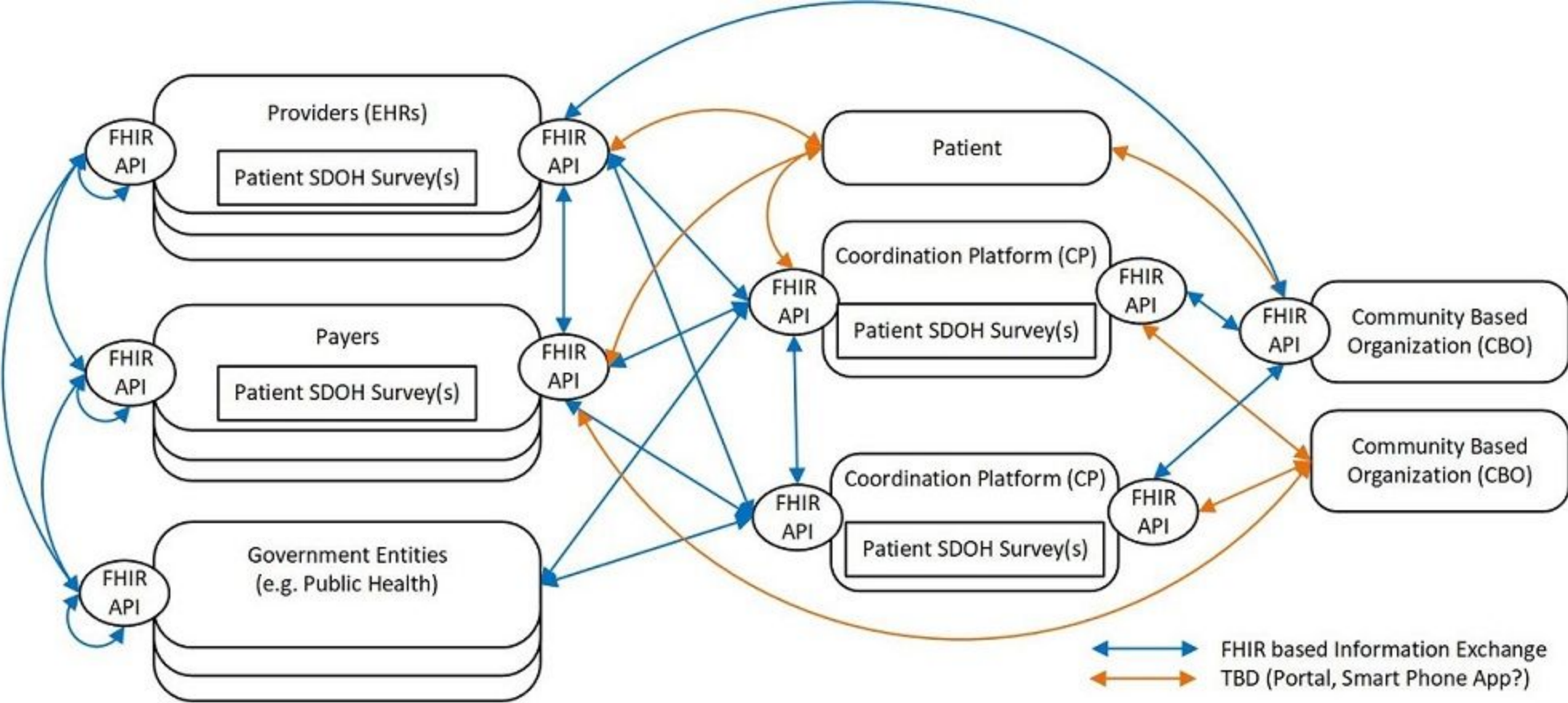
Functional Use Case (full details)	Referral Originator	Actors
<p>Direct Referral Patient assessed by Provider and referred to CBO to deliver the service</p>	Provider Payer CP	Practitioner Care Coordinator Patient CBO
<p>Indirect Referral Patient is assessed by a Practitioner and referred to CP. CP refers to a CBO to deliver the service</p>	Provider Payer	Practitioner Care Coordinator Patient CP CBO
<p>Direct Referral Light Same as Direct Referral but CBO has an application that can interact with a FHIR API and does not have a FHIR server</p>	Provider Payer CP	CBO
<p>Closing the loop with the Patient Patient assessed by Provider and referred to CBO to deliver the service</p>	Provider Payer CP	Practitioner Care Coordinator Patient CBO

Workflow Overview



Note: This diagram has not yet been updated for the non-clinical resource type of **PersonalCharacteristic**, which is self-reported and based on the Observation resource

Overview of IG Role Interactions

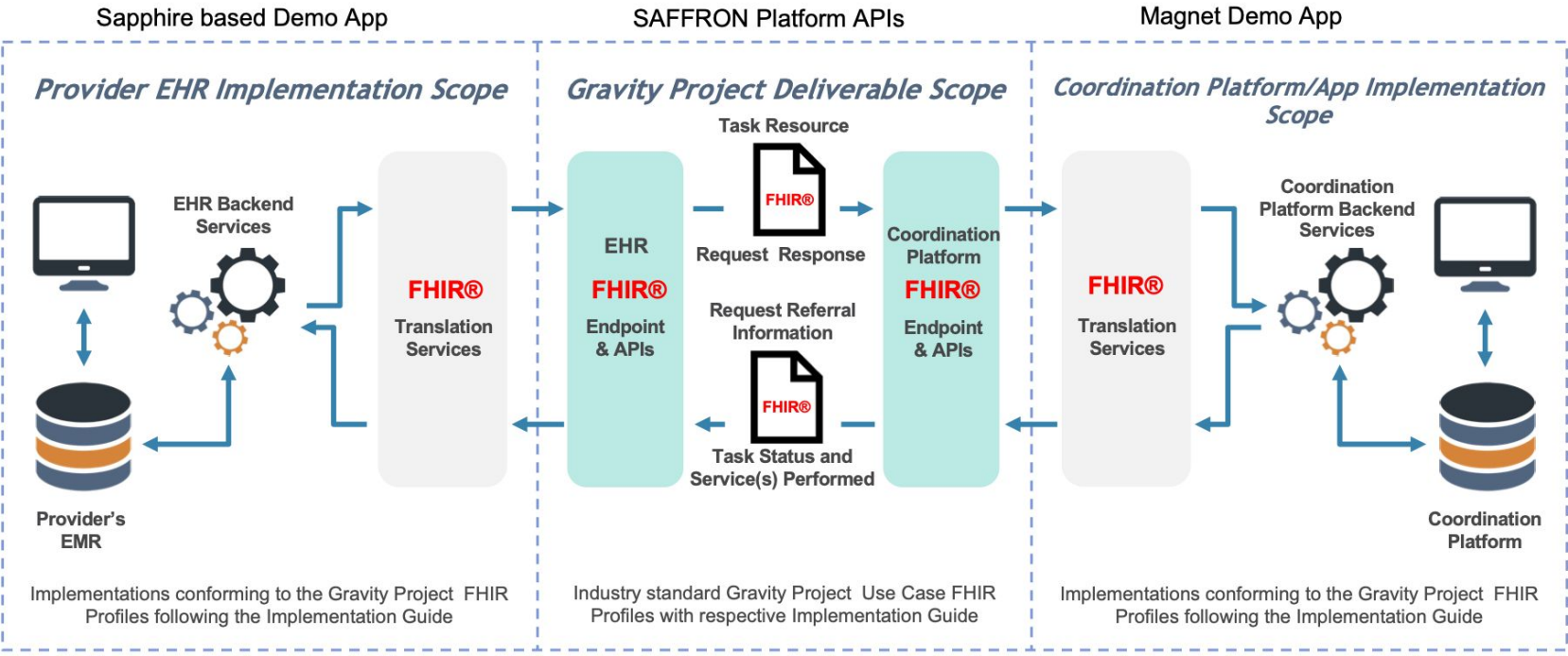


Note: Where two FHIR APIs are shown, it is for drawing simplicity and not a technical requirement

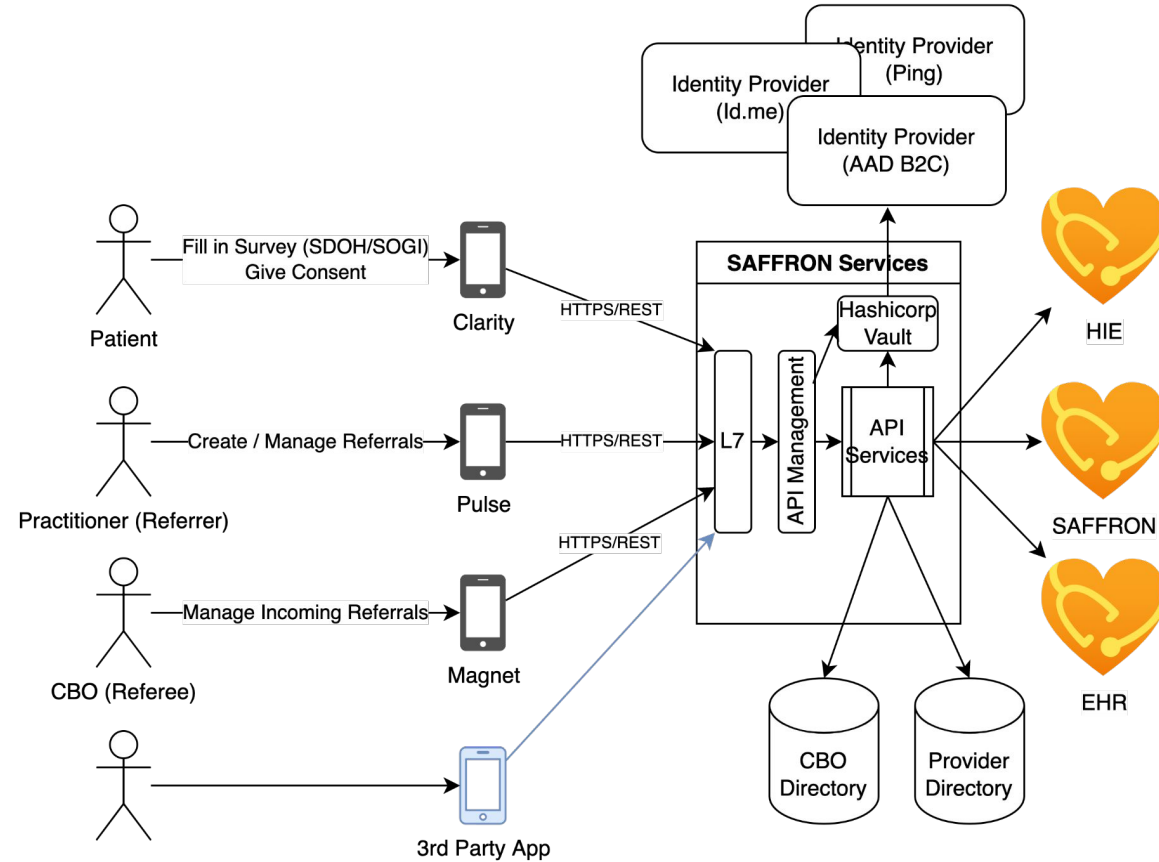
Saffron Labs Demo of Referral Light Use Case



RI for Closed loop referral (example flow)



Saffron Labs Demo of Referral Light Use Case



Each API Endpoint should have a configurable FHIR server
There should be a default FHIR server when it is not overridden

Querying System Actors for Gravity Track - “who can bring what to test?”

Actor	Role	Participant Name/ Organization
1	Practitioner or Patient referral exchange (Pulse/ Clarity)	Greg Harris/ Saffron Labs
2	Planning to participate with code -	John Manning, Matt Bishop, Brian Handspicker /FHIR-FLI - MayJuun, Open City Labs
3	Participating with code - Patient/Caregiver eCare plan application; fill out FHIR Questionnaire PRAPARE	Karen Bertodatti, Dave Carlson, Emma Jones / EMI Advisors Project: Multiple Chronic Conditions (MCC) eCare Plan Project (NIDDK/AHRQ)
4	Gravity pilot site - will test the following SDOH domains: food insecurity, housing, and transportation.	OCHIN
5		
6		
7		
8	Hoping to learn more on 6/22 call	Lisa Nelson, Matt Alrod/ MaxMD
9	Hoping to learn more on 6/22 call	Mary, Lisa, Mike/ MiHIN
10	Hoping to learn more on 6/22 cal	HealthLX
11	OBSERVER - Referee/ CBO role	QS Systems
12	OBSERVER - FHIR IG to support access to a Human Service Resource Directory to enable social care referrals. Testing solutions while testing IG (balloting in the Jan 2023 PSS)	Ioana Singureanu, Serafina Versaggi/ FEI Systems- Administration for Community Living (ACL)
13	OBSERVER - Gravity pilot site	AllianceChicago

Group Discussion & Decision on Which Scenarios to Demonstrate

- Personas?
- Scenarios?
- FHIR resources primarily being tested?
 - service requests, goals, questionnaires
- Workflows primarily being tested?

Next Steps

Participate in the July CMS Connectathon, powered by **SAFFRON**_{labs}

- Register [here](#) by June 30th.
- Gravity Track page [here](#).
- Weekly Gravity Track Planning calls, Wednesdays from 3:00- 4:00 PM ET. Join [here](#).

Questions?

Gravity Project Interim Tech. Director, Greg Harris:
Gregory.harris@newwave.io

Gravity Executive Committee Co-Chair, Aaron Seib:
aaron.seib@newwave.io

Extra Slides For Future Calls....

Patient Persona: Stella Creed - UPDATE for Gravity

- Dual Eligible (Medicare & Medicaid 1915(c) Waiver)
- 65+ years old
- Health Concerns: CKD, Frailty, Mobility, Depression
- Social Needs: Food Insecurity, Housing, Transportation, Social Isolation
- HCBS Services:
 - Community Integration
 - Home delivered meals
 - Home-based habilitation
 - Companion
 - Non-medical transportation
 - Housing
 - Crisis Intervention/ Behavior supports
- Challenges:
 - Coordination across multi-disciplinary provider groups
 - Navigating eligibility across Medicare and Medicaid programs
 - How to manage health care and HCBS received
 - How to manage progressing CKD
 - Sharing multiple assessments across settings
 - Not able to see big picture 'care plan'

Patient Persona for Testing: Betsy-Johnson Smith - **UPDATE**

- Dual Eligible (Medicare & Medicaid 1915(c) Waiver)
- 65+ years old
- Health Concerns: Frailty, Mobility
- Social Needs: **Transportation**
- HCBS Services:
 - **Non-medical transportation**
- Challenges:
 - Coordination across multi-disciplinary provider groups
 - Navigating eligibility across Medicare and Medicaid programs
 - How to manage health care and HCBS received
 - Sharing multiple assessments across settings
 - Not able to see big picture 'care plan'

Connectathon Actors for Gravity Track - UPDATE for Gravity

Confirmed System Actors for Gravity Track

Actor	Role	Participant Name/ Organization
1	TBD	Greg Harris/ Saffron Labs
2		
3		
4		
5		
6		
7		
8		
9		
10		
11		

Scenarios: Contributing Ingredients to Larger Stew - UPDATE

Scenario	Scenario Description
Gravity Scenario 1	Rebecca Smith: Outpatient encounter for person with social risks/needs, screening, integrate screening info into EMR for clinical review. Visit Summary includes medical and social care information.
Gravity Scenario 2	Betsy Smith-Johnson: Dual eligible receiving home and community-based services has an episode of care that encompasses an inpatient and SNF care then is discharged to home where home health care is provided to augment HCBS support before eventually being transitioned back to oversight by a Primary Care Physician.

Gravity Track Scenes

1. TBD by Gravity Community of Testers
2. TBD by Gravity Community of Testers

Gravity Track Priority Scenes for Testing

1. TBD by Gravity Community of Testers
2. TBD by Gravity Community of Testers

Walk through Scenes 1 & 9

Google Sheet Care Coordination Track Steps

<https://docs.google.com/spreadsheets/d/1AZrtn3-PFFVirmqxm0EHLptdSpWK0Cy8JPhlqYs5mBE/edit#gid=0>

Review Track Testing Schedule

Google Sheet with Mater Schedule for May 13 - 15

<https://docs.google.com/spreadsheets/d/1hFmq2jvEwxLabb0dy3B09dZkwkDirfxH7XpYcR15Qpc/edit#gid=0>

Ideas for capturing lessons learned and future testing considerations